

ATS

PC Class Automatic Transfer Switch



Product Type

YE S 1 - 125 NA / 4P 125A R

Enterprise code	Product category	Design code	Current rank	Product code	Pole	Rated current	Working mode
-----------------	------------------	-------------	--------------	--------------	------	---------------	--------------

Name	Content			
Enterprise code	Shanghai Yuhuang Electric Co.,Ltd			
Product category	PC Class Automatic Transfer Switch			
Design code	1			
Current rank	Product code	Current rank		
	NA, N, C	32A, 63A, 125A, 250A, 400A,630A		
	M	1600A		
	Q	3200A		
	SA/LA3	63A,125A,250A,630A		
	S, SN, LA, L	63A,125A,250A,630A,1600A(S-type products only, support 1600A)		
	GA, GA1	100A,250A,630A,1600A,3200A		
	GN, GN1, GNF	100A,160A,250A,630A,1600A,3200A		
Product code	Product code	Working current	Features	
	NA	16A~630A	Integral type, 2 positions, intelligent, 250A~630A wire input in the same side is available	
	N	16A~630A	Split type , 2 positions, terminal wiring type block connect, 250A 630A wire input in the terminal wiring type side is available	
	C	16A~630A	Split type Type, 2 Positions, Aviation Plug-in type Connecting, 250A~630A Wire Input In The Same Side type Is Available	
	M	630A~1600A	split type, 2 positions	
	Q	630A~3200A	split type, 2 positions	
	SA	20A~630A	Integral type, 3 positions, intelligent, communication function is available	
	LA3	20A~630A	Integral type, 2 positions, intelligent, communication function is available	
	S	20A~1600A	Split type, 3 positions, aviation Plug-in connecting	
	SN	20A~630A	Split type, 3 positions, terminal wiring type connecting	
	LA	20A~630A	Integral type, 2 positions, simple, no terminal wiring type additional function	
	L	20A~630A	Split type, 2 positions	
	G	GA	16A~3200A	Integral type, 3 positions, with fire-fighting function
		GA1	16A~100A	Integral type, 3 positions, without fire-fighting function
GN		16A~3200A	Integral type, 3 positions, intelligent, with 3 phases sampling fuction	
GN1		16A~3200A	Integral type, 3 positions, basic, with single phase sampling fuction	
GNF		16A~3200A	Split type, 3 positions	
Pole	2P (125A and below 125A products) ,3P ,4P			
Rated current	16A~3200A			
Working mode	R=Self-input and self-recover B=II circuit first F: Utility- Generator T=Communication, SA LA3 type can choose it			

1. Split type products can be used together with Y-70 series intelligent dual power controllers.
2. Add T to NA, N, C series products whose input wires are the same side when you make orders, for example NAT, NT, CT.

Product feature

YES1 series ATSE is made up of switch body and transfer controller. The switch is driven by electromagnetic coil,so the transfer speed is very fast. The power source of controller takes main power or emergency power AC220V as working voltage.

NA,SA,LA3 type ATSE is integral type. The controller is installed inside of switch body. User only need to connect the main circuit then ATSE could work. It's convenient for users to connect wires. Meanwhile,SA type ATSE with generator starting signal, input without power, feedback without power, main power and emergency power closing indicator.

N,C,M,Q,S,L is split type. The controller is separated with switch body. User should connect controller with switch body by wires.

Integral and split type ATSE both with over voltage,under voltage,default phase etc faultdetection function and also with generator start and stop signal output function(When main power fault,the signal will be sent out after 3s time delay. When main power recover,the signal will be stopped after 3s time delay).

NA Type Automatic Transfer Switch Two Positions and Integral Type

Technical parameter



- YES1-125NA
- Rated current: 32A~125A

Model \ Type	YES1-32NA	YES1-63NA	YES1-125NA						
Rated current (A)	16,20,25,32	40,50,63	80,100,125						
Rated control current (A)	5								
Rated short circuit current (kA)	10								
The rated impulse withstand voltage (kV)	8								
Usingzation Category	AC-33B								
Service life	Mechanical	20000							
	Electric	6000							
Pole	2P	3P	4P	2P	3P	4P	2P	3P	4P
Weight(kg)	4.2	4.7	5.2	4.2	4.7	5.2	5	5.5	6.5
Operating cycle(s/time)	10								

N Type Automatic Transfer Switch Two Positions and Split Type

Technical parameter



- YES1-125N
- Rated current:32A~125A

Model \ Type	YES1-32N	YES1-63N	YES1-125N						
Rated current (A)	16,20,25,32	40,50,63	80,100,125						
Rated control current (A)	5								
Rated short circuit current (kA)	10								
The rated impulse withstand voltage (kV)	8								
Usingzation zation Category	AC-33B								
Service life	Mechanical	20000							
	Electric	6000							
Pole	2P	3P	4P	2P	3P	4P	2P	3P	4P
Weight(kg)	3.2	3.7	4.2	3.2	3.7	4.2	4	4.5	5.5
Operating cycle(s/time)	10								

C Type Automatic Transfer Switch Two Positions and Split Type

Technical parameter



- YES1-125C
- Rated current:32A~125A

Model \ Type	YES1-32C	YES1-63C	YES1-125C						
Rated current (A)	16,20,25,32	40,50,63	80,100,125						
Rated control current (A)	5								
Rated short circuit current (kA)	10								
The rated impulse withstand voltage (kV)	8								
Usingzation Category	AC-33B								
Service life	Mechanical	20000							
	Electric	6000							
Pole	2P	3P	4P	2P	3P	4P	2P	3P	4P
Weight(kg)	3.2	3.7	4.2	3.2	3.7	4.2	4	4.5	5.5
Operating cycle(s/time)	10								

NAT/NT/CT Type ATS 2 positions (wire input in the same side)

Technical parameter



- YES1-400NAT
(wire input in the same side)
- Rated current: 160A~630A

Model	Type	YES1-250 NAT/NT/CT	YES1-400 NAT/NT/CT	YES1-630 NAT/NT/CT	
Rated current (A)		160,180,200,225,250	250,315,400	500,630	
Rated control current (A)		7			
Rated short circuit current (kA)		10			
The rated impulse withstand voltage (kV)		8			
Usingzation Category		AC-33B			
Service life	Mechanical	17000			
	Electric	6000			
Pole		3P	4P	3P	4P
Weight(kg)		18	19	18.5	20.5
Operating cycle(s/time)		10			

NA/N/C Type Automatic Transfer Switch Two Positions

Technical parameter



- YES1-400NA
- Rated current: 160A~630A

Model	Type	YES1-250(NA/N/C)	YES1-400(NA/N/C)	YES1-630(NA/N/C)	
Rated current (A)		160,180,200,225,250	250,315,400	500,630	
Rated control current (A)		7			
Rated short circuit current (kA)		10			
The rated impulse withstand voltage (kV)		8			
Usingzation Category		AC-33B			
Service life	Mechanical	17000			
	Electric	6000			
Pole		3P	4P	3P	4P
Weight(kg)		18	19	18.5	20.5
Operating cycle(s/time)		10			

M Type Automatic Transfer Switch Two Positions

Technical parameter



- YES1-1600M
- Rated current: 630A~1600A

Model	Type	YES1-630M	YES1-800M	YES1-1000M	YES1-1250M	YES1-1600M	
Rated current (A)		630	800	1000	1250	1600	
Rated control current (A)		12					
Rated short circuit current (kA)		32					
The rated impulse withstand voltage (kV)		8					
Usingzation Category		AC-33iB					
Service life	Mechanical	2500					
	Electric	500					
Pole		3P	4P	3P	4P	3P	4P
Weight(kg)		37	42.5	39	46	41	48
Operating cycle(s/time)		15	20	25			



- YES1-3200Q
- Rated current:630A~3200A

Q Type Automatic Transfer Switch Two Positions

Technical parameter

parameter	Type	YES1-3200Q															
Rated current (A)		630	800	1000	1250	1600	2000	2500	3200								
Rated control current (A)		16															
Rated short circuit current (kA)		120															
The rated impulse withstand voltage (kV)		8															
Usingzation Category		AC-33iB															
Service life	Mechanical	2500															
	Electric	500															
Pole		3P	4P	3P	4P	3P	4P	3P	4P	3P	4P	3P	4P	3P	4P	3P	4P
Weight(kg)		39	44.5	40	47	41	48.5	42	50	45	54	58	68	59.5	70	61	72
Operating cycle(s/time)		15		20		25											

SA/LA3 Type Automatic Transfer Switch Three/Two Positions

Technical parameter



- YES1-125SA(Integral type)
- Rated current:16A~630A

Type	YES1-63SA YES1-63LA3	YES1-125SA YES1-125LA3	YES1-250SA YES1-250LA3	YES1-630SA YES1-630LA3									
Insulation voltage	AC690V												
Rated voltage	AC400V												
Rated current	16A~63A	20A~125A	160A~250A	315A~630A									
The rated impulse withstand voltage (kV)	8kV												
Usingzation Category	AC-33iB												
Vote number	Double Throw												
Wiring manner	Panel Mounting												
Pole	2P	3P	4P	2P	3P	4P	2P	3P	4P	2P	3P	4P	
Weight(kg)	5	5.5	6.3	6	6.3	7	6	8	10	11	13.6	16.2	
Chara- cteristic	Short time withstand current	10kA									12.6kA		
	Connect sub-capacity	6le									6le		
	Service life	6000times/20000times									1000times/ 4000times		
	Operating cycle	60times/h											
Auxiliary switch	I. IIpower: 2 normal open, 2 normal closed Capacity: 15A/AC												
Accessory	Manual operating handle, division plate												

Note: The weight listed only for reference

S/SN/L/LA type ATS 3/2 Positions

Technical parameter



- YES1-125S
(Split type, 3 positions)
- Rated current: 16A~630A

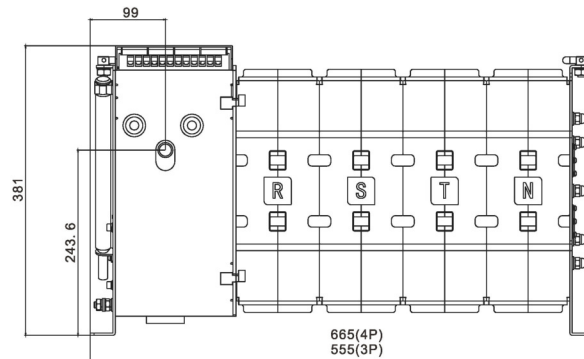
Type	YES1-63 S/SN/L/LA	YES1-125 S/SN/L/LA	YES1-250 S/SN/L/LA	YES1-630 S/SN/L/LA	YES1-1600 S									
Insulation voltage	AC690V													
Rated voltage	AC400V													
Rated current	16A~63A	20A~125A	160A~250A	315A~630A	800A~1600A									
The rated impulse withstand voltage (kV)	8kV													
Usingzation Category	AC-33iB				AC-33B									
Vote number	Double throw													
Wiring manner	Panel mounting				Horizontal									
Pole	2P	3P	4P	2P	3P	4P	2P	3P	4P	2P	3P	4P	3P	4P
Weight(kg)	5	5.5	6.3	6	6.3	7	6	8	10	11	13.6	16.2	50	60
Chara- cteristic	Short time withstand current	10kA				12.6kA				32kA				
	Connect sub-capacity	6le				6le				10le				
	Service life	6000times/20000times				1000times/4000times				1000times/3000times				
	Operating cycle	60times/h				20times/h								
Auxiliary switch	I、II power: 2 normal open & 2 normal closed, 1 normal open & 1 normal closed (800~1 600A), Capacity: 15A/AC250V													
Accessory	Manual operating handle, division plate													

Note: The weight listed only for reference

- YES1-1600S Outline and installation dimension



- YES1-1600S(split type, 3 postions)
- Rated current:800A~1600A



GA/GA1 Type Automatic Transfer Switch

Technical parameter



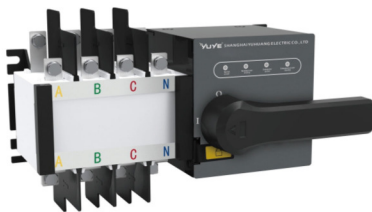
□ YES1-100GA

Type	YES1-GA, YES1-GA1																									
Rated current (Ith)	100			250			630			1600		3200														
Rated working current (Ie)	16	20	25	32	40	50	63	80	100	125	160	200	225	250	315	350	400	500	630	800	1000	1250	1600	2000	2500	3200
Rated insulation voltage (Ui)	690V											800V														
Rated Impulse Withstand Voltage (Uimp)	8KV											8KV														
Rated Working Voltage (Uw)	AC400V											AC400V														
Usingzation Category	AC-33B											AC-33iB														
Rated limited shortcircuit current	8KA			17KA			26KA			67.5KA																
Rated short-time withstand current transfer time	5kA/30ms			10kA/60ms			12.6kA/60ms			32kA/60ms		1.2s		1.8s		2.4s										
Control power voltage	DC24V、48V、110V、AC220V																									
Rated frequency	voltage	20W			325W			355W			40W	440W	600W													
	Normal				62W			74W			9W	98W	120W													
Weight(kg) 4 pole	3.4			6.0			7.6			15.8		16.8		36	36	37	38.6	55	61	67						

Note: The weight in the table are for reference only.

GN/GN1 /GNF Type Automatic Transfer Switch

Technical parameter



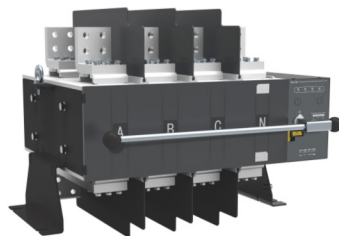
□ YES1-100GN

Type	YES1-GN、YES1-GN1、YES1-GNF																									
Rated current (Ith)	100			160			250			630			1600		3200											
Rated working current (Ie)	16	20	25	32	40	50	63	80	100	125	160	200	225	250	315	350	400	500	630	800	1000	1250	1600	2000	2500	3200
Rated insulation voltage (Ui)	690V											800V														
Rated Impulse Withstand Voltage (Uimp)	8KV											12KV														
Rated working voltage (Ue)	AC400V/50Hz																									
Usingzation Category	AC-33iB																									
Rated limited short circuit current	8KA			17KA			26KA			67.5KA																
Rated Short-time Withstand Current Icw	5kA/30ms			10kA/60ms			12.6kA/60ms			32kA/60ms																
Transferring Time	2.5s			1.2s/2.5s			1.2s		1.8s		2.4s															
Rated Short-circuit Limited Current Iq	prepositive Fuse 50kA											prepositive Fuse 90kA														

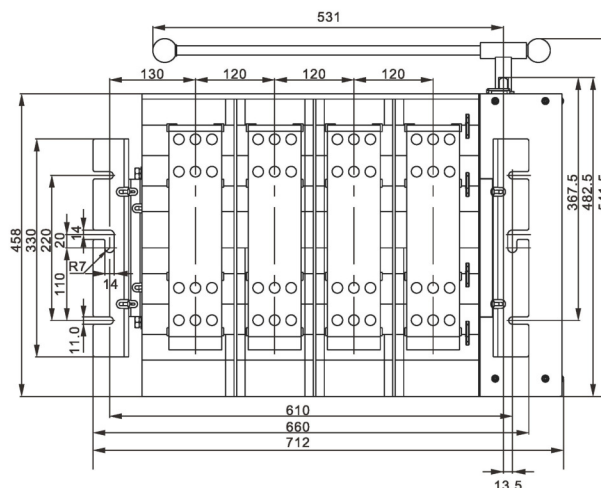
Remark: The transferring time of 630A products is 1.2s (universal motor), 2.5s (synchronous motor).

Outline and installation dimension

□ 2000A~32000A Outline and installation dimension(Two input and two output)



□ YES1-3200GN



Product Type

Y - 70 0 / B



□ Y-700

Enterprise code	Product category	Design code	Function code
-----------------	------------------	-------------	---------------

Name	Content
Enterprise code	Shanghai Yuhuang Electric Co.,Ltd.
Product category	PC class ATS controller
Design code	0,1,2
Function code	Blank: DC power supply(without following function) B: AC power supply(AC220V) I: Current detection T: 485 communicating function

Note: If Y-700 controller need to with B,I or T function, please mark separately;
Y-701 controller with B function;
Y-702 controller with I,T function.
701,702Wire length: 1.8 meters.

Y-700 Technical parameter

Type	Y-700		
Working voltage	1. DC8.0V~35.0V continuous power supply 2. HTS220/HWS560 power module to supply power (When it no battery to supply power) 3. AC power source L1N1,L2N2 supply power. The range of voltage: AC(160V~280V).(Y-700/B,Y-700/BI)		
Overall power consumption	<3W(Standby mode: ≤2W)		
A C voltage input	Alternating current system	Y-700、Y-700/i	Y-700/B、Y-700/BI
	Three phase four wire(L-L)	80V~625V	80V~480V
	Three phase three wire(L-L)	80V~625V	Unsuitable
	Single phase two wire(L-N)	50V~360V	50V~280V
	Two phase three wire(A-B)	80V~625V	80V~480V
Rated frequency	50/60Hz		
The output capacity of closing break-brake relay	16A 250VACPassive output		
The output capacity of programmable relay	16A/7A 250VACPassive output		
The digital quantity input port	Grounding effective		
Communication mode	RS485 1solation interface, MODBUS Agreement		
Appearance dimension	211mmx155mmx55mm		
Hole size	186mmx141mm		
Working conditions	Temperature:(-25~+70)℃ Humidity: (20~90)%		
Storage conditions	Temperature:(-30~+80)℃		
Protection grade	IP55: Waterproof rubber gasket is installed between the controller and the controll screen. IP42: Waterproof rubber gasket is NOT installed between the controller and the controll screen.		
Dielectric strength	Object: Between in input/output/power source Reference standard: IEC688-1992 Test method: AC1.5KV/1 min Leakage current 5mA		
Weight	0.8kg (Y-700,Y-700/i)/1.0kg(Y-700/B、Y-700/BI)		



□ Y-701

Y-701/Y-702 Controller function

Products Type number	Y-701	Y-702
Installation method	Split type	
Display mode	Indicator light	LCD
Rated duty	Uninterrupted duty	
Self-input and self restore	■	■
Self-input and without self restore	■	■
Normal port and standby port share to each other	■	■
Generator auto-start function	■	■
Normal power detect	Four-phase lacking phase detection, three-phase over-voltage/under-voltage detection.	
Standby power detect	Four-phase lacking phase detection, three-phase over-voltage/under-voltage detection.	
Passive fire protection input	■	■
(DC9-36V)Active fire protection input	■	■
Active fire control input	■	■
Voltage real-time display	□	■
Normal power and standby power indication	■	■
Normal power and standby power over-voltage/under-voltage adjustable	■	■
Generator start and stop time adjustable	■	■ (F/F1)
programmable output	□	■
RS485 communicating function	□	■

Note:■ This function is available, □ This function is not available.



□ Y-702

Y-702 Parametric code, range and factory default

NO	Parametric code	Para name	Range	Factory default
1	u280	Common over-voltage	200-300	280
2	u165	Common under-voltage	100-200	175
3	n280	Standby over-voltage	200-300	280
4	n165	Standby under-voltage	100-200	175
5	┐	Delay time of cutting to common power	0-240	1
6	┘	Delay time of cutting to standby power	0-240	1
7	q	Time-consuming of turn on the generator	0-240	5
8	d	Time-consuming of turn off the generator	0-240	5
9	P	Brightness control	0-10	8
10	E	A TS working mode	0=Self-input and self-recover 1=Self-input without self-recover 2=Standby power priority	0
11	J	Programmable output(F/F1)	0-8	0
12	□	Local host	1-32	1
13	b	Baud rate	1=2400 2=4800 3=9600 4=19200	3
14	H	Reset to defaults	(0- 3) 3=Reset to defaults	0

Attention:Select h=003 will restore the ats,this operation may produce an error of voltage display in range $\pm 10v$.